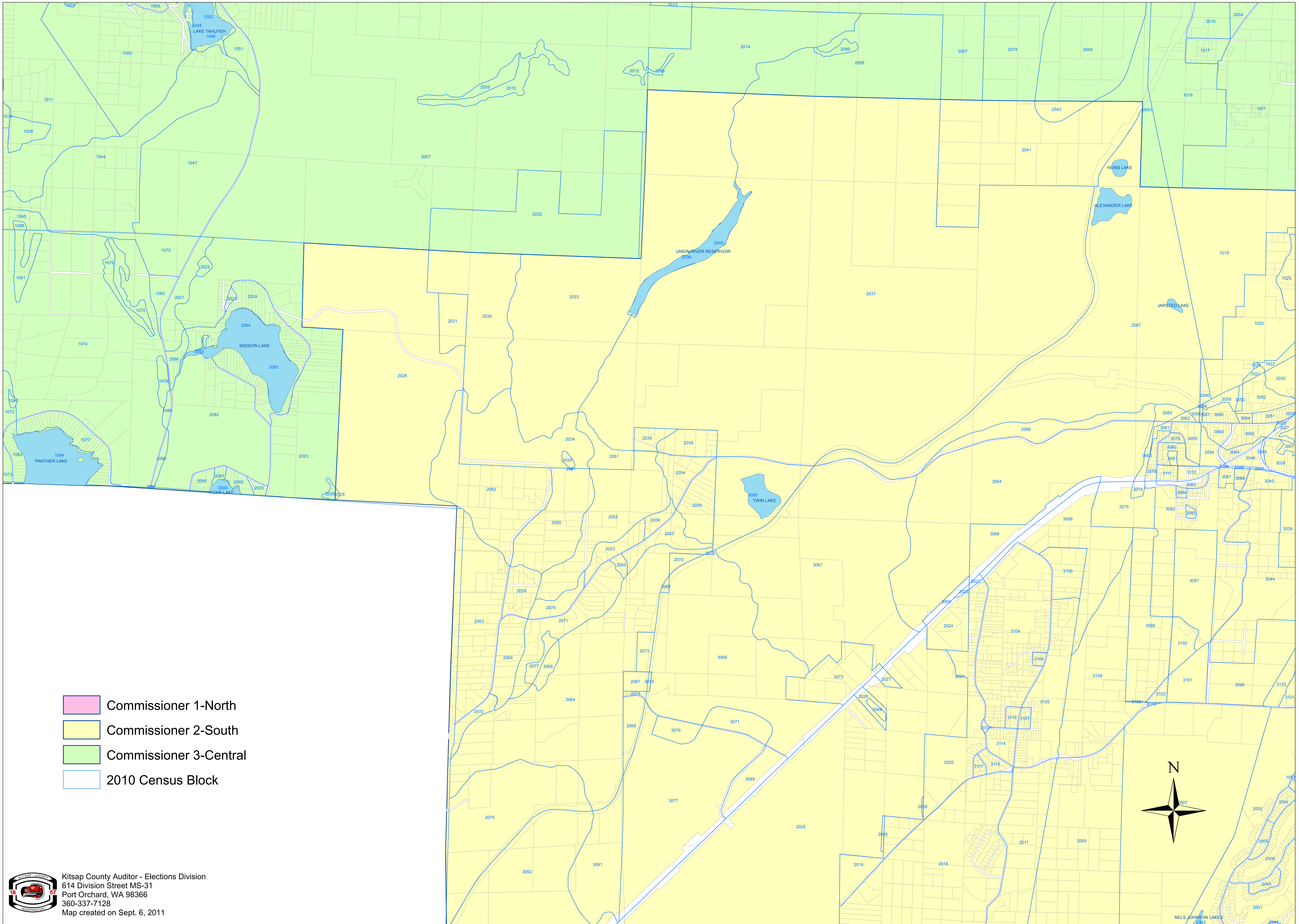


**County Commissioner**

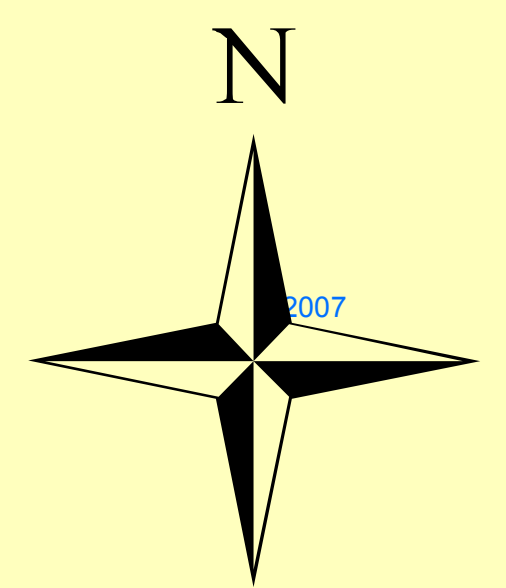
- Commissioner 1 - North
- Commissioner 2 - South
- Commissioner 3 - Central
- 2010 Census Block



- Commissioner 1-North
- Commissioner 2-South
- Commissioner 3-Central
- 2010 Census Block



Kitsap County Auditor - Elections Division  
 614 Division Street MS-31  
 Port Orchard, WA 98366  
 360-337-7128  
 Map created on Sept. 6, 2011



NELS JOHNSON LAKES